

GOOD
NEWS

WICCF Christmas NEWSLETTER

WICCF HAVE SECURED FUNDING

[READ MORE](#)

Western Isles Community Care Forum have secured funding for **Eolas**, our social group for unpaid carers in the Western Isles. We meet up monthly to enjoy a workshop or just a catch up with a cuppa!

Last year we enjoyed: Fishing, Flavour, Pottery, Handcream, Candle Making, Birds of Prey, Clay Pigeon Shooting, Owls, Yoga, Speakers, Quiz with Tea/Coffee and Cakes



Eolas



Why not take a break from your caring duties?
Come along and join us at **Eolas** for
Tea/Coffee and Cakes (free of charge).
Contact us if you require alternative care.

See below a list of the dates secured with the funding received for 2026:

Lewis & Harris	Borve House Hotel 2.30pm to 4pm	Failte Centre 2.30pm to 4pm	Croft Bistro (UHI) 10.30am to 12pm	Lewis Venue tbc	Harris Hotel 2.30pm to 4pm	Leverburgh Hub 2.30pm to 4pm
Dec	16th				11th	
Jan 2026		26th Birds of Prey	8th			22nd Hand Reflexology with Taisha
Feb	25th				12th	
March				18th	12th	
April		20th			16th	



01859 502588



info@wiccf.co.uk

Uist & Barra	Langass Lodge 2.30pm to 4pm	Borrodale Hotel 2.30pm to 4pm	Stepping Stones 2.30pm to 4pm	Lochmaddy Hotel 2.30pm to 4pm	Balivanich Hall 2pm to 4pm	Castlebay Hotel 2.30pm to 4pm	An Garadh Cafe 2.30pm to 4pm
Dec					9th Wreath Making	10th	
Jan 2026				14th			21st
Feb			11th			18th	
March		10th					11th
April	14th					15th	

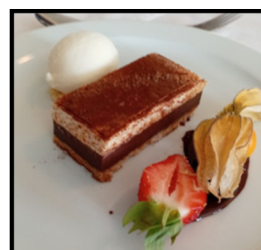
We launched our HS Carer Card during Carers Week and welcomed Ian Macrae, who gave an interesting talk on the work of Advocacy Western Isles. Carers also enjoyed some lovely lunches.



**WICCF working in partnership
with CnES to provide
Free access to CnES Sport
Centres during Carers Week 2025**



COMHAIRLE NAN EILEAN SIAR



Why not take a break and enjoy a few days respite?

**Most self catering properties are available from
October to March, subject to availability.**

Check the Website for details of properties.

To arrange a booking, contact the office.

**Contact the office on: 01859 502588
for an application form or download one from our website: info@wiccf.co.uk**



HS Carer Card

Success following launch on Carers Week



Western Isles Community Care Forum would like to thank all the local businesses already signed up to provide discounts or benefits. Please see our website for all details.

What is HS Carer Card? – It is a card which will bring discounts or benefits with certain businesses across the Western Isles. It can also be used in a clinical setting to identify yourself as a carer. Each card will have your name, photograph and expiry date.

Who is it for? – It's for unpaid carers living in the Western Isles and for bereaved carers up to a maximum of one year following the bereavement of the cared for person.

How do I get an HS Carer Card? – Contact the office, or a member of staff, for an application form or download one from our website (www.wiccf.co.uk). You will need to supply a photograph of yourself as well.

Contact the office on: 01859 502 588

Email: info@wiccf.co.uk

for an application form or download one from our website: www.wiccf.co.uk

How do I know which businesses I can use it in? – The WICCF website (www.wiccf.co.uk) will have a list of all the businesses that have signed up across the Western Isles. Look out in shop windows for a window sticker as well!

WICCF would like to thank all the businesses already signed up to HS Carer Card:

Thank you

The Craigard Hotel
Isle of Barra



Shoreline Stoneware



tech mobile



Are you someone who has health or social care support to live at home, or are you a carer of someone who does?

The Western Isles Joint Integration Board wants to improve health and care support for older people, or people living with frailty. We want to hear your suggestions about how we can do this.

Find out more by contacting:
Patricia.Clapham@stir.ac.uk
Marina.Maciver@stir.ac.uk

How can I get involved? You can be part of a group that meets every month to discuss this project and give advice and support, or you may want to be involved just once by giving someone your view about health and care support you receive.



This project is supported by IMPACT – the UK centre for Improving Adult Care Together.

IMPACT are funding volunteer payments and expenses. Contact Patricia and Marina to find out more about this.



Comhairle nan Eilean Siar
Ag Obair Còmhla Airson nan Eilean



Customer Services: 01851 600501



Support from CNES

- If you have a disability and are unable to put your wheelie bin out for collection, **you can apply to CNES for a back door collection**. Contact the cleansing Dept for a 'Back Door Collection Form'.
- If anybody in your household uses incontinence pads you can request a **second wheelie bin**
- Should anybody in the household have a **formal diagnosis of dementia**, you can claim a **Council Tax discount**.

Keep Safe, Keep Well this Winter!

Comhairle nan Eilean Siar has launched this year's winter safety Initiative Cùm sàbhailte, cùm gu math sa Gheamhradh seo! Keep Safe, Keep Well this Winter!

The over-arching theme of this year's campaign is one of being prepared and taking steps now that will make the winter months easier. Topics covered include general winter health advice, fire prevention, safety measures to adopt when venturing outside, emergency helpline numbers and a directory of local support services.

Cllr Paul Steele, Leader of Comhairle nan Eilean Siar, commented:

"The overarching message of this guidance is one of taking a few simple, planned steps now that will make things easier, and crucially a lot safer for you, your loved ones, and those within your wider community, throughout the coming winter months. I would like to encourage everyone in our communities to take the time to read this guidance and most importantly to look out for one another through the winter months."

MORE INFO

https://www.cne-siar.gov.uk/sites/default/files/2025-11/Keep_Safe_Keep_Well_Winter_Safety_Campaign_October_2025.pdf



FIRST TO AID CARERS

TESCO STRONGER STARTS



Training

Western Isles Community Care Forum (WICCF)

The £1000 grant received from Tesco has been used to provide basic First Aid training events to unpaid carers across the Western Isles. First Aid knowledge is beneficial to have - you never know when you might need it. Our trainer has equipment for you to use, so it will be hands on training, making it very interesting.



Keep an eye out for announcements over the next few months for more sessions.

Short breaks fund

Funded by the Scottish Government

“Absolutely amazing, to get away from the situation, from your caring role and have a chance to relax.”



“It was just lovely to know people cared enough to give an award and it was nice to feel recognised as you can slide into caring and not realise how much time it takes up and with your thoughts and energy.”

The Short Breaks Fund is to give carers a break from their caring duties which could be a short holiday, pursuit of a hobby, some pampering, meals out, takeaways, driving lessons, purchase of magazine subscriptions, the list of possibilities is immense.

APPLY NOW

Contact the office on: 01859 502588

for an application form or download one from our website: info@wiccf.co.uk

RECEIPT

IMPORTANT

TOTAL: _____



easyfundraising

It takes 2 minutes & 8,000+ shops will donate to us for free every time you shop with them!

When you shop online with participating retailers, they'll donate part of what you spend to your chosen cause. Whether you shop on your phone, laptop or tablet, you can earn free cashback donations for your cause.



If you're not supporting Western Isles Community Care Forum yet, please sign up now!



3 simple ways to raise

① App

Download our free app on iOS or Android. Choose a retailer, shop as normal, and your cause gets a free donation.

② Donation Reminder

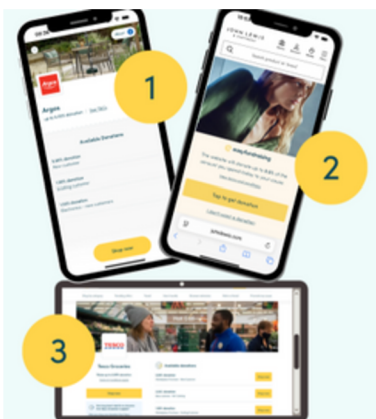
Add our browser extension and get a handy pop-up whenever a retailer is offering a donation – just click to activate.

③ Website

Log in, pick your retailer, shop, and raise a free donation when you checkout.

Visit:

<http://easyfundraising.org.uk/.../60a28d9c7e101c2d0ded2fe9/>



Thinking of a holiday,
before you book
please get in touch with Catherine.

The aim of **Respitality** is to provide a short vital break from routine for unpaid carers in Scotland when they need it most. This is achieved by connecting carers' organisations with hospitality, tourism and leisure businesses who are willing to donate a break free of charge.

There are breaks available nationally to all carers and there are also some breaks which WICCF have secured locally for the benefit of carers living in the Western Isles.

Current Offers of Respitality in the Western Isles

Activities

Julia Shaw Slow Yoga, Lewis
Designs on Benbecula
Isle of Harris Distillery - Tours
Essence of Harris - Candle Making
North Uist Distillery - Tours

Pampering

PJ Hair Designs, Lewis
Gracie, The Barbers, Lewis

Accommodation

Moorfield Cottage, Harris
Westend Bed and Breakfast, Lewis
Stornoway Bed and Breakfast, Lewis
Isle of Eriskay Glamping Pods
Sealladh an Iar, Barra

Dining Out

Croft Bistro, Lewis
Skoon Café, Harris
North Harbour Bistro, Scalpay
Taigh Chearsabhagh Café, Uist

**IF YOU WOULD LIKE TO DISCUSS
RESPITALITY OR TAKE ADVANTAGE OF
THE LOCAL OFFERS**

**Contact Catherine for more information on
offers not listed**



07487 540173



carersupport@gmail.com



Thank you

When I arrived at Scarista I was offered a hot drink and snack. I met a lovely couple from the USA who later invited me to join them for dinner with the third member of their party. We are still in touch with each other.

The weather was beautiful so I sat outside in the afternoon and read in the sun. Photo attached. My bed had an amazing surround - perfect for a lover of books such as myself.

I'd like to thank all at Scarista for giving me another chance to experience their hospitality and to meet new people in a lovely environment. It's always a bonus to feel like a person in one's own right.

Thanks too to Emma and Andrew for their hospitality at Skoon Art' Café after I checked out of Scarista. The voucher for a free cuppa and cake was also provided via Respitality

Thanks also to WICCF and Catherine in particular for all her help in reorganising my break.

I thoroughly recommend to all registered carers that they explore Respitality and thank all those who donate to this amazing project.



Funeral Support Payment

Funeral Support Payment helps pay for funeral costs if you live in Scotland. You can use the payment towards funeral costs for a baby, child or adult. This includes babies who were stillborn.



- It usually will not cover the full cost of the funeral but it should help pay for some costs.
- It can be paid either to you or the funeral director who's helping you plan the funeral. Only one person can get Funeral Support Payment for the funeral.
- You will not be eligible if you've already had other government support for the funeral.

Before applying for Funeral Support Payment, you should:

- register the death of the person who died
- check that you're eligible for Funeral Support Payment
- consider giving your funeral director consent to speak with Social Security Scotland about your application
- To complete this form, you'll need:
- your National Insurance number
- details of the funeral director
- any travel receipts or funeral bills you have so far
- your bank account details if you'd like Social Security Scotland to pay you and not your funeral director
- a letter sent to the person who died showing their name and address, and dated within the last 12 months

Apply Online

Most people take around 25-35 minutes to complete the form.

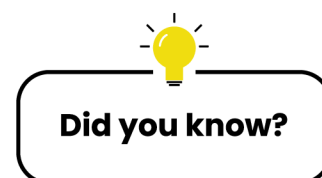
<https://applications.socialsecurity.gov.scot/funeral-support-payment#eligibility>

Unpaid carer's leave

Employees are entitled to unpaid leave to give or arrange care for a 'dependant' who has:

- a physical or mental illness or injury that means they're expected to need care for more than 3 months
- a disability (as defined in the Equality Act 2010)
- care needs because of their old age

**The dependant does not have to be a family member.
It can be anyone who relies on them for care.**



Employees are entitled to carer's leave from their first day of work for their employer. Their employment rights (like holidays and returning to their job) are protected during carer's leave.

How long employees can take?

Employees can take up to one week of leave every 12 months.

A 'week' means the length of time they usually work over 7 days. For example, if someone usually works 3 days a week, they can take 3 days of carer's leave.

They can either take a whole week off or take individual days or half days throughout the year.

Help and support

You can find out more about carer's leave on the Acas (Advisory, Conciliation and Arbitration Service) website:

[www.https://www.acas.org.uk/carers-leave](https://www.acas.org.uk/carers-leave)

Blue Badge

A Blue Badge is a card that lets you park closer to where you're going.

If you're a driver or a passenger and you have mobility issues, you may be eligible for a Blue Badge.



Apply or Renew a Blue Badge <https://apply-blue-badge.service.gov.uk/applicant>

There are several categories of disability that can make you eligible for a Blue Badge. Depending on the category you apply under, you will be asked a set of questions about your personal circumstances, your conditions and how they affect your mobility. You will also be required to supply supporting evidence.

If you need support with your application you can contact us using the details below:



01851 822 708



bluebadgeteam@cne-siar.gov.uk



Looking for an idea for a Christmas Present?

How about **CARE TO COOK?**

A recipe book packed with easy to make recipes.

On sale in local shops or direct from WICCF at £10 plus £2 P+P

Lewis: Cross Stores, Bethesda Charity Shop, Baltic Book Shop, Campbell's Filling Station, Lochs Filling Station, Buth an Rubha, Uig Community Shop, Commun Eachdraidh Nis

Harris: Harris Tweed Shop, Ardhasaig FS, An Clachan

Uist & Eriskay: Bayhead Shop & FS; Hebridean Jewellery; MacGillivray's, Benbecula; Maclean's Butchers, Balivanich; Post Office, Daliburgh; Eriskay Shop

Barra: Padula's, Castlebay



IMPORTANT

Priority Services

**POWER CUT?
CALL 105**

If you have a disability or medical condition or any other reason for additional support, you can register for priority services with the following services on the links below:



<https://www.ssen.co.uk/power-cuts-emergencies/priority-services/>



www.scottishwater.co.uk/Help-and-Resources/Contact-Us/Additional-Support/Priority-Services-Register



www.ovoenergy.com/help/article/priority-services-register

Ovo Energy's Priority Service Register is for anyone who's vulnerable, or just needs a little extra assistance at a difficult time in their life.

The WICCF office will be closed over the festive period

from 5pm on Friday 19th December 2025 to 9am on Monday 5th January 2026.

All the staff wish you a very happy and restful Christmas.



WESTERN ISLES COMMUNITY CARE FORUM
Room 14, Council Offices, Tarbert, Isle of Harris, HS3 3BG
Telephone: 01859 502 588 info@wiccf.co.uk

